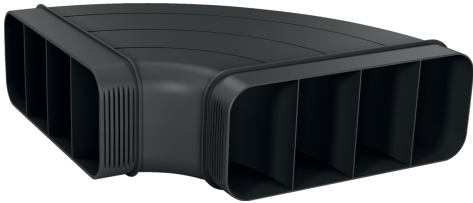


**Flat duct, 90 °, horizontal
HZ9VDSB1**



- ✓ Horizontal 90° bend
- ✓ 90° flat duct bend element (male) in horizontal configuration
- ✓ Aerodynamically optimised design to minimise pressure loss and maximise air flow rate. Easy-to-cut & easy-to-connect via the female connector sleeve element.
- ✓ The element complies with the Needle Flame Test (according to IEC 60695-11-5) & the V2 flammability class (according to UL94).

Dimensions of the packed product (HxWxD): ... 130 x 300 x 305 mm
Pallet dimensions: 175.0 x 80.0 x 120.0
Standard number of units per pallet: 80
Weight: 0.6 kg
Gross weight: 1.0 kg
EAN code: 4242003890677



Flat duct, 90°, horizontal HZ9VDSB1

measurements in mm

